



READ MORE

EARLY SIGNS OF ALZHEIMER'S

Memory changes that disrupt daily life.

Difficulty in planning or solving problems.

Difficulty completing familiar tasks.

New problems with words in speaking or writing.

Trouble understanding visual images and spatial relationships.

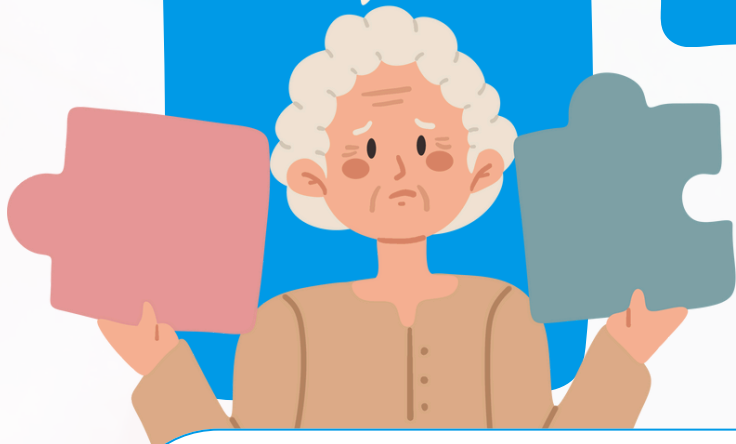
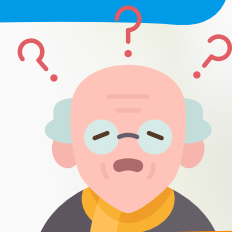
Confusion with time or place.

Misplacing items and losing the ability to retrace steps.

Decreased or poor judgment.

Changes in mood or personality.

Withdrawal from work or social activities.



 **ALZHEIMER'S[®] ASSOCIATION**



MYHEALTHFAIR.COM